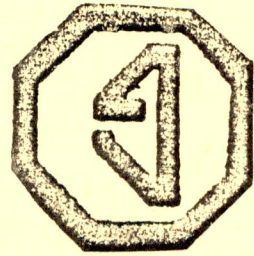
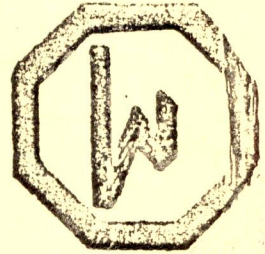


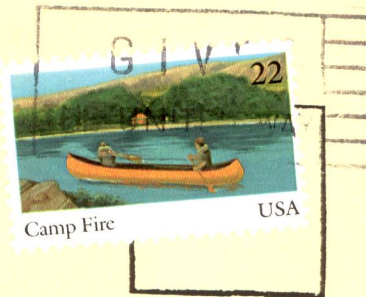
AZETTE



ORRIS



LA. M.G.C.C.  
P.O. BOX 641095  
KENNER, LA 70064



TO:  
ALDEN BIENVENU  
RT. 2 BOX 94361  
RESERVE, LA. 70084

THE LOUISIANA CENTRE OF THE MG CAR CLUB  
NEWSLETTER

OFFICERS FOR 1986

PRESIDENT ..... Jim Vansickle  
(H) 394-0484  
(W) 523-3931

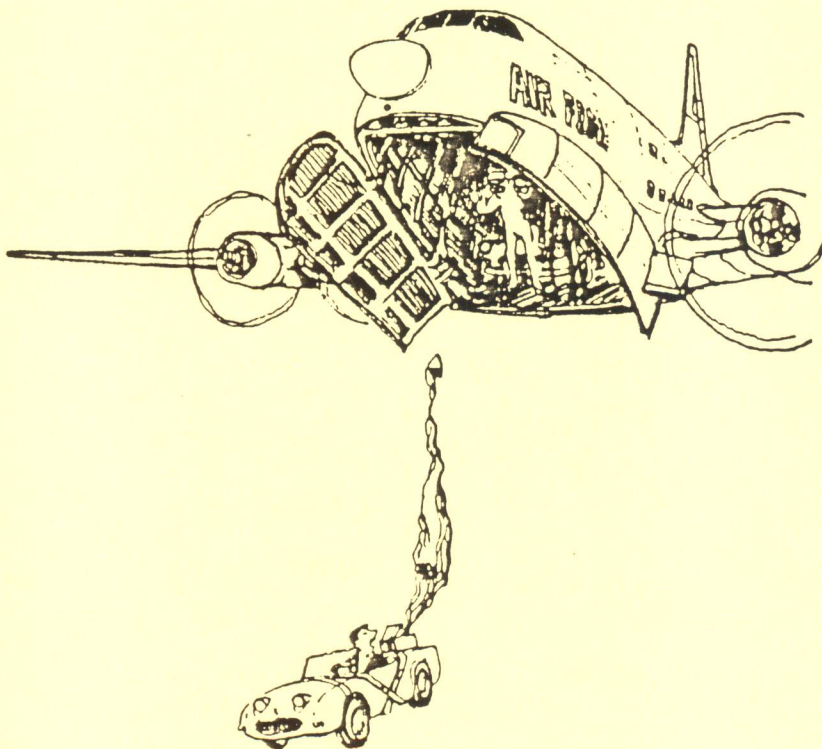
VICE PRESIDENT ..... Jack Kennedy  
(H) 885-7021  
(W) 246-0905

SECRETARY-TREASURER ..... Mike CENAC  
(H) 469-1882  
(W) 241-9444

MEMBER-AT-LARGE ..... Willard Serrin  
(H) 467-2681  
(W) 889-1199

NEWSLETTER EDITORS ..... BOB HUGHES  
(H) 831-7713  
(W) 888-7790

AND ..... Lee H. Matthews  
(H) 245-8094  
(W) 244-5664



"I still think this a strange way to start a rally!"

CALENDAR OF EVENTS

FOR 1986

JUNE

JUNE 7 & 8 - - - - - Cajun Country Weekend  
JUNE 24 - - - - - GENERAL MEETING  
JULY 12 - - - - - Night Rallye (FLYER TO BE MAILED)  
JULY 29 - - - - - GENERAL MEETING  
AUG UNK - - - - - Tubing Trip  
AUG 26 - - - - - GENERAL MEETING  
SEPT UNK - - - - - Night at the Races  
SEPT 30 - - - - - GENERAL MEETING  
OCT 4 & 5 - - - - - Camping in Ville Platte  
OCT 28 - - - - - GENERAL MEETING  
NOV 9 - - - - - E. REYNOLDS MEMORIAL RALLYE  
NOV 25 - - - - - GENERAL MEETING  
DEC UNK - - - - - Christmas Party

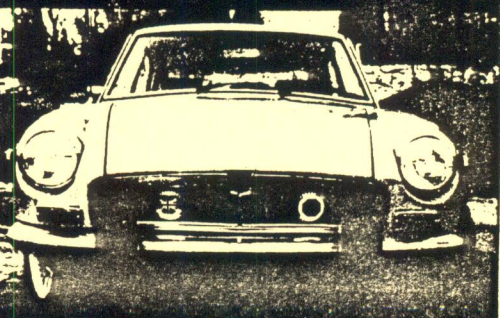
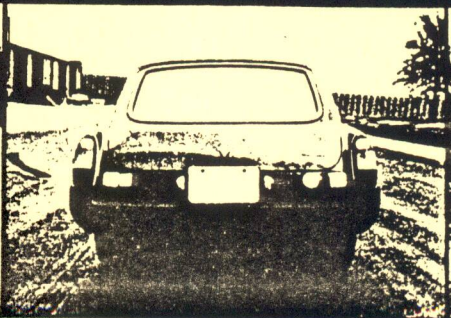
OUR NEXT GENERAL MEETING WILL BE

AT 8:00 PM. THE MEETING PLACE WILL BE \*\*\* TRIBUTE'S GRILL \*\*\*

4941 West Napoleon Ave.

METAIRIE

WE HOPE TO SEE YOU THERE, SO PLEASE COME.



## WHAT YEAR IS YOUR MG?

WHAT YEAR IS YOUR MG? THAT'S NOT ALWAYS AN EASY QUESTION TO ANSWER FOR SEVERAL REASONS. MOST PEOPLE REFER TO THEIR CAR TITLE WHICH IS NOT ALWAYS CORRECT. IN THE 50'S AND 60'S MANY STATES TITLED A CAR "WHEN IT WAS SOLD NEW", NOT BY THE MODEL YEAR. THIS IS WHY PEOPLE HAVE 62 MGB'S AND 63 MGA'S ETC. SOME CARS MAY HAVE SAT IN DEALER INVENTORIES FOR UP TO 2 YEARS. WE HAVE HAD SOME CUSTOMERS TELL US THEY OWN A 1982 MGB! WE HAVE COMPILED CHASSIS ID NUMBERS FROM MANY SOURCES AND STATISTICALLY DEVELOPED THROUGH EXTRAPOLATION AND INTERPRETATION THE INFORMATION YOU NEED TO ORDER THE CORRECT REPLACEMENT AND RESTORATION PARTS FOR YOUR MG.

FILL IN YOUR CAR'S CHASSIS ID NUMBER:

MGA					
MGA	1500		8/55 TO 5/59	HD10101 - 68850	1489CC
MGA	1600		5/59 TO 5/61	GHN68851 - 100351	1588CC
MGA	1600 MKII		5/61 TO 7/62	GHN2 100352-109070	1622CC
MGA	1500	COUPE	10/56 TO 5/59	HM20671 - 68850	
MGA	1600	COUPE	5/59 TO 5/61	GHD68851 - 100351	
MGA	1600 MKII	COUPE	5/61 TO 7/62	GHD2 100352-109070	
MGA TWIN CAM			5/58 TO 5/60	YM 501 - 2611	
MGA TWIN CAM		COUPE	5/58 TO 5/60	YD 501 - 2611	
*MGA DELUXE 1600			6/60 TO 5/61	12 COUPES	70 ROADSTERS
*MGA DELUXE 1600 MKII			5/61 TO 5/62	23 COUPES	290 ROADSTERS

\*MGA DELUXE TOTAL PRODUCTION 395 CARS WERE BUILT ON THE TWIN CAM CHASSIS, DUNLOP 4WHEEL DISC BRAKES, CENTER LOCK DISC WHEELS, AND FITTED WITH 1588 OR 1622 ENGINES.

MGB					
MGB ROADSTER	63	GHN3 - 101			
	64	GHN3 - 19586			
	65	GHN3 - 48766			
	66	GHN3 - 71441	MGB-GT	GHD3 - 71933	
	67	GHN3 - 108039		GHD3 - 82698	
	68	GHN4 - 138401		GHD4 - 139472	
	69	GHN4 - 158371		GHD4 - 158233	
	70	GHN5/UA/187211		GHD5 - 187841	
	71	GHN5/UB/219021		GHD5/UB/219355	
	72	GHN5/UC/258001		GHD5/UC/258004	
	73	GHN5/UD/294251		GHD5/UD/296001	
	74	GHN5/UE/328101		GHD5/UE/328801	
	75	GHN5/UF/367901			
	76	GHN5/UG/386601			
	77	GHN5/UH/410001			
	78	GHN5/UJ/447001			
	79	GHN5/UL/471001			
	80	GVVDJZAG/501001			

JUL 62	101	- IT ALL BEGINS. BMC "B" SERIES 1798CC ENGINE 18G, BANJO REAR AXLE, POSITIVE GROUND.
FEB 64	31021	- CLOSED CIRCUIT BREATHING, 18GA REPLACES 18G ENGINE NO.
SEP 64	48766	- 5 MAIN BEARING ENGINE 18GB, OIL COOLER, ELECTRIC TACHOMETER.
MAR 65	56743	- 12 GALLON FUEL TANK REPLACES 10 GALLON.
MAR 65	57986	- DOOR HANDLES CHANGED TO PUSHBUTTON TYPE.
OCT 65	71933	- MGB-GT INTRODUCED WITH TUBE-TYPE AXLE.
SEP 66	100414	- REVERSE LAMP - ROADSTER.
SEP 66	106928	- REVERSE LAMP - GT.
NOV 66	108039	- FRONT SWAY BAR ON ROADSTER.
67	123716	- 132922 EITHER BANJO OR TUBE-TYPE AXLE ON ROADSTER.
67	129287	- BANJO AXLE STANDARD ROADSTER WITH WIRE WHEELS.
67	132463	- BANJO AXLE STANDARD ROADSTER WITH DISC WHEELS.
OCT 67	138801	- MKII MODEL ROADSTER. ENGINE 18GD, PRE-ENGAGED STARTER, DUAL BRAKE MASTER CYLINDER, ALTERNATOR, ALL SYNCHRO MESH TRANSMISSION, FLOOR PAN ALTERED TO ACCOMMODATE NEW MANUAL & AUTOMATIC TRANSMISSIONS, NEGATIVE GROUND
OCT 67	139824	- MKII GT INTRODUCTION.

OCT 69	187211	- MKII MODEL, 186H ENGINE, RUBBER INSERT ON BUMPER GUARDS, ROSTYLE WHEELS.
SEP 70	219001	- RECESSED GRILLE, AIR PUMP STANDARD, NEW CONVERTIBLE TOP, COURTESY LIGHT.
OCT 71	258001	- ENGINE CHANGED TO 18V, NEW ROCKER SWITCHES
OCT 72	294251	- NEW BLACK FACED GRILLE, HEATED REAR WINDOW, STANDARD ON GT.
OCT 72	296001	- GT AS 294251, BLACK WINDSHIELD WIPERS.
SEP 73	339095	- 368081 VERTICAL BLACK BUMPER OVERRIDERS.
SEP 73	339472	- 367803 GT - VERTICAL BLACK BUMPER OVERRIDERS.
SEP 74	360301	- "74 1/2" MODEL INTRODUCED, BLACK "SOFT NOSE" FRONT AND REAR BUMPERS, RAISED RIDE HEIGHT, SINGLE ZENITH/STROMBERG CARBURETOR, SINGLE 12 VOLT BATTERY, SERVO ASSISTED BRAKES. CATALYTIC CONVERTER FOR CALIFORNIA MODELS.
DEC 74		MGB-GT WITHDRAWN FROM USA MARKET.
JUN 75	380278	- OVERDRIVE STANDARD.
AUG 76	410001	- THICKER SWAY BAR FRONT, REAR SWAY BAR STANDARD, 2 ELECTRIC COOLING FANS, GEAR LEVER OVD SWITCH, SEALED COOLING SYSTEM.
OCT 22/80	523001	- LAST MGB.

MGC			
MGC		7/67 TO 8/69	G/CN101 - 9099
MGC-GT		7/67 TO 9/69	G/CD110 - 9102

MGC - BMC "C" SERIES 6 CYLINDER 2912CC GIRLING DISC BRAKES, 5X15 WHEELS

MG MIDGET				
MG MIDGET	MKI	61	GAN-1	101 - 7656
	MKI	62	GAN-1	7657 - 16183
MG MIDGET	MKI	1100	62	GAN-2
	MKI	1100	63	GAN-2
	MKI	1100	64	GAN-2
MG MIDGET	MKII	64	GAN-3	25788 - 36743
	MKII	65	GAN-3	36744 - 45905
	MKII	66	GAN-3	45906 - 52389
MG MIDGET	MKIII	66	GAN-4	52390 - 52748
	MKIII	67	GAN-4	52749 - 61079
	MKIII	68	GAN-4	61080 - 66112
	MKIII	69	GAN-4	66113 - 74885
MG MIDGET	MKIV	69	GAN-5	74886 - 75714
	MKIV	70	GAN-5-UA	75715 - 88596
	MKIV	71	GAN-5-UB	89501 - 105146
	MKIV	72	GAN-5-UC	105501 - 123644
	MKIV	73	GAN-5-UD	123731 - 138753
	MKIV	74	GAN-5-UE	138801 - 153920
MG MIDGET	MKIV	1500	75	GAN-6-UF
	MKIV	1500	76	GAN-6-UG
	MKIV	1500	77	GAN-6-UH
	MKIV	1500	78	GAN-6-UJ
	MKIV	1500	79	GAN-6-UL

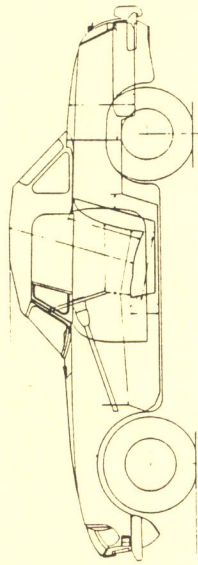
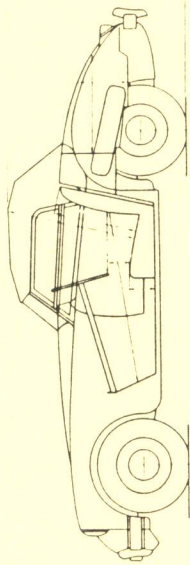
MG MIDGET MKI	61	BMC "A" SERIES 948CC ENGINE, AC MECHANICAL FUEL, 1/4 ELLIPTIC REAR SPRINGS, SLIDING-REMOVABLE SIDE WINDOWS.
MKI	62	BMC 1098CC ENGINE, FRONT LOCKHEED DISC BRAKES.
MKII	64	SU ELECTRIC FUEL PUMP, 1/2 ELLIPTIC REAR SPRINGS, ROLL-UP WINDOWS, DOOR LOCKS.
MKIII	66	1275CC ENGINE, FIXED CONVERTIBLE TOP.
MKIV	69	ROSTYLE WHEELS, BLACK ROCKER PANELS.
MKIV	70	COURTESY LAMP, TRUNK LAMP.
MKIV	72	ALTERNATOR.
1500 MKIV	75	1500 TRIUMPH SPITFIRE ENGINE, 1 CARBURETTOR, BLACK FRONT AND REAR "SOFT" BUMPERS. 8.4 GALLON GAS TANK REPLACES 7.2 GALLON TANK. ALL SYNCHRO TRANSMISSION, RIDE WEIGHT RAISED 1".
1500 MKIV	78	CONSOLE FITTED.
1500 MKIV	79	NOV 1979, "THE END". 226526 CARS BUILT OVER 18 YEARS

Victoria British Ltd. Box 14991 Lenexa, KS 66215 • 1-800-255-0088

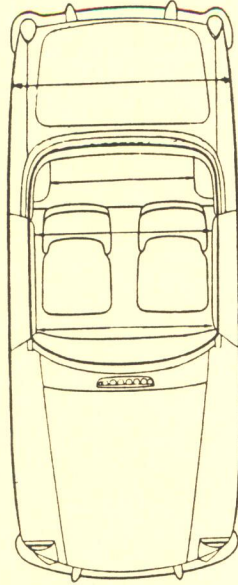
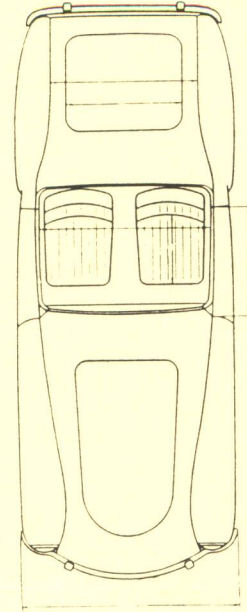
CHECK OUT THEIR PART PRICES!!

CHAPTER TWO -MGB by F. Wilson McComb

Comparing side views, it is obvious how the MGB gained over the MGA in interior space without increasing overall size



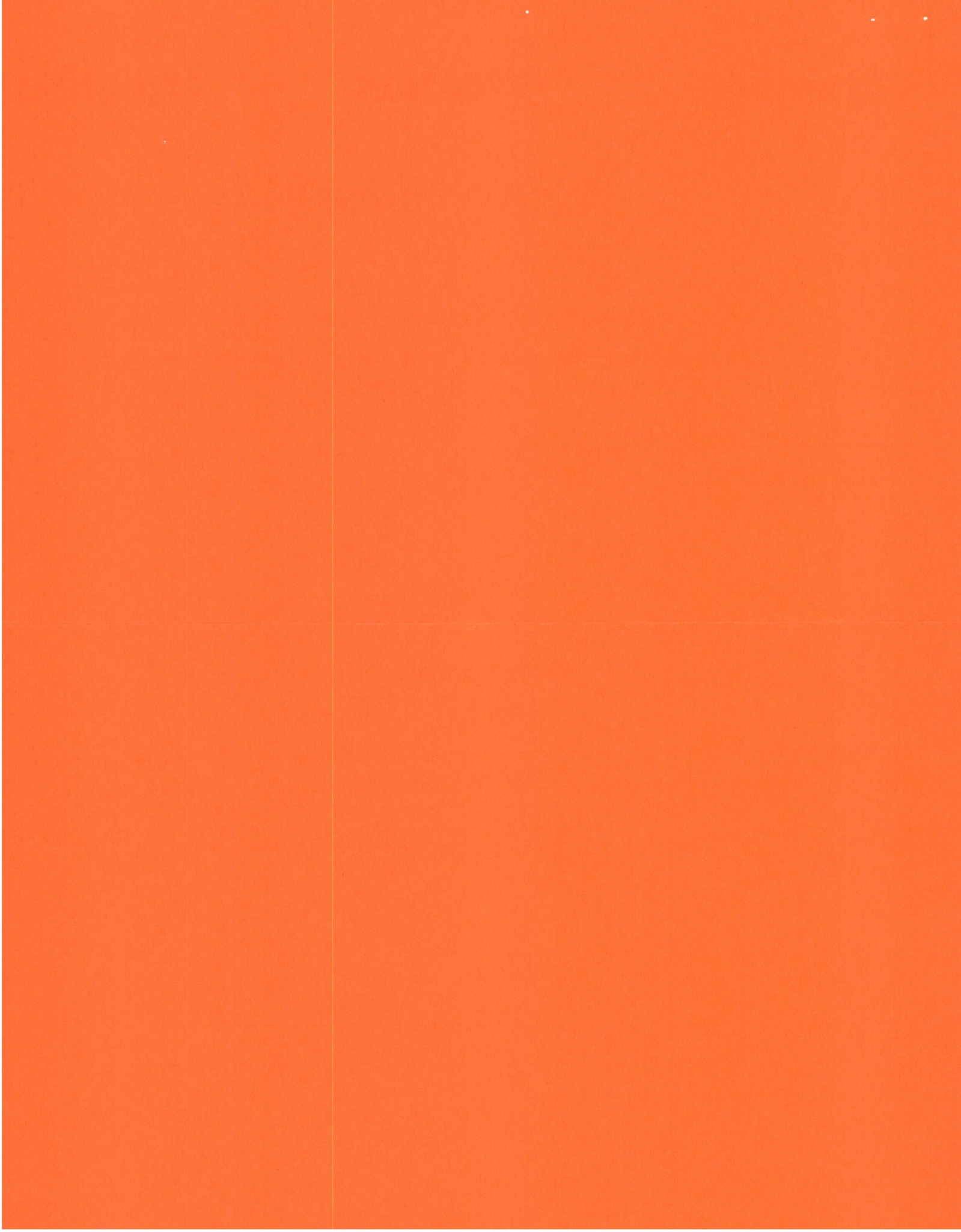
	MGA	MGB
Wheelbase	94 in	91 in
Overall length	156 in	153.2 in
Overall height	50 in	49.25 in
Head room	37 in	37 in
Leg room	44-48 in	44.5-52 in
Seatback to wheel	13-16 in	14.5-22.5 in
Seat-cushion to wheel	6 in	6.5 in
Mean height of luggage space	14 in	16.5 in



Plan views of the MGA and MGB again reveal the improvement in accommodation

	MGA	MGB
Front track	47.5 in	49 in
Rear track	48.75 in	49.25 in
Overall width	57.25 in	59.9 in
Cockpit length	32.5 in	49.75 in
Cockpit width	45 in	50.5 in
Mean length of luggage space	30 in	29.5 in
Mean width of luggage space	39 in	57 in





**Attention**

**Attention**

**Attention**

*We're Moving*

TO TRIBUTE'S GRILL, 4941 West Napoleon Ave. in  
Metairie. The time is 8:00 and food can be purchased.

VETERANS BLVD.

I-10

TRIBUTE'S GRILL



WEST NAPOLEON BLVD.

WEST NAPOLEON CANAL

T  
R  
A  
N  
S  
C  
O  
N  
T  
I  
N  
E  
N  
T  
A  
L

C  
L  
E  
A  
R  
V  
I  
E  
W  
B  
L  
V  
D

WEST METAIRIE